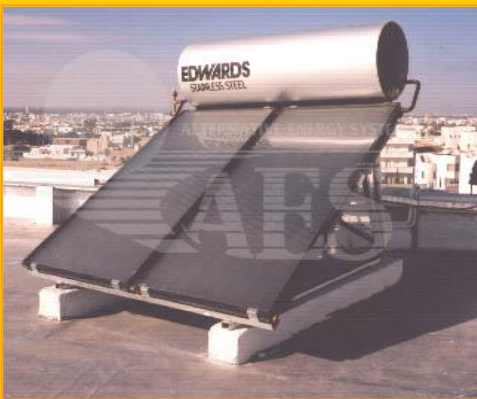


Enjoy the energy of the future!

## PROSOL Project



Solar Thermal



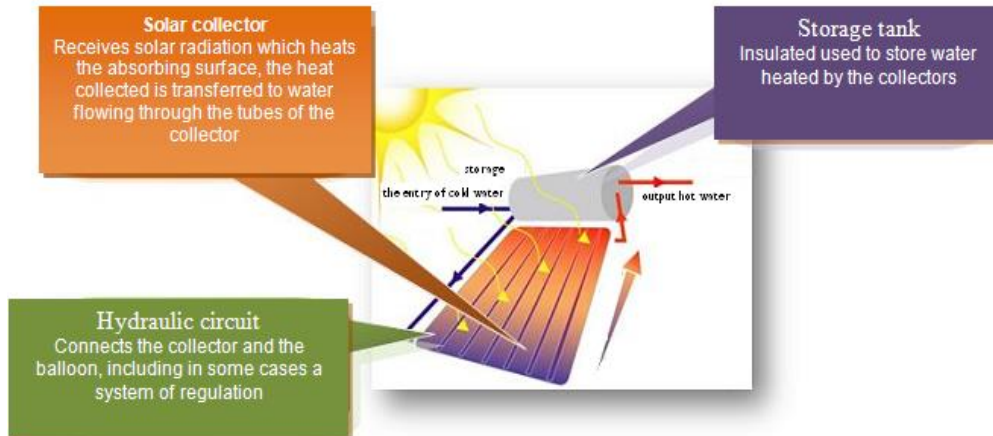
# AES



## HEATER SOLAR WATER

### Individual Solar Water Heater Components (ISWH)

An individual solar water heater is composed of three elements:



### Principle

Thermal solar collectors are put on the roof. The water warmed is managed towards a balloon of storage by a system of circulation and regulation.

### Solar collector

The solar collector receives the solar radiation, which warms the absorbent surface. They got heat is transferred to the water which circulates in the tubes of the collector.

### Storage Tank

The storage tank, isolated well, store the water warmed by the collector.

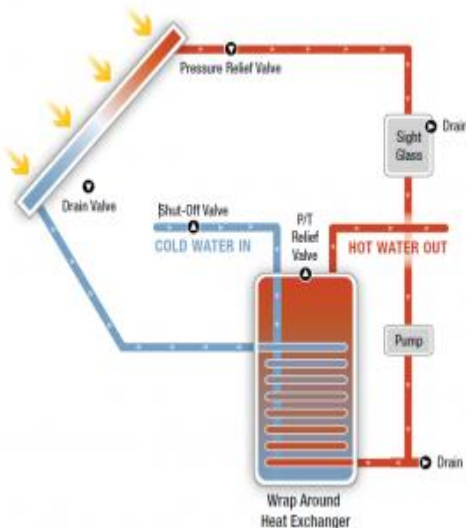
### Insulated pipe

The insulated piping (isolated well, it limits the decreases of heat) in which circulates a coolant liquid.

### Auxiliary heating device

An auxiliary heating device can be integrated into the reservoir in the form of an electric resistance, or of a type gas boiler, electric, etc. ...

The auxiliary heating device is useful when the solar energy is not enough for needs.



### Advantages:

- Implementation of a mechanism of financing allowing revitalizing the market of the SHWS (the STATE - STEG-ATTIJARI BANK) «Program PROSOL»
- Installation is quick and does not generally require heavy work.

## PROSOL PROGRAM

Aware of the stakes involved in promoting this sector, the Tunisian State has set up an ambitious program to allow the resuscitation of the sector and the revitalization of the market for solar water heaters. This is the PROSOL Tunisia program.

PROSOL program is based around incentive funding mechanism including subsidies SHW acquisition and the possibility of underwriting bank loans.

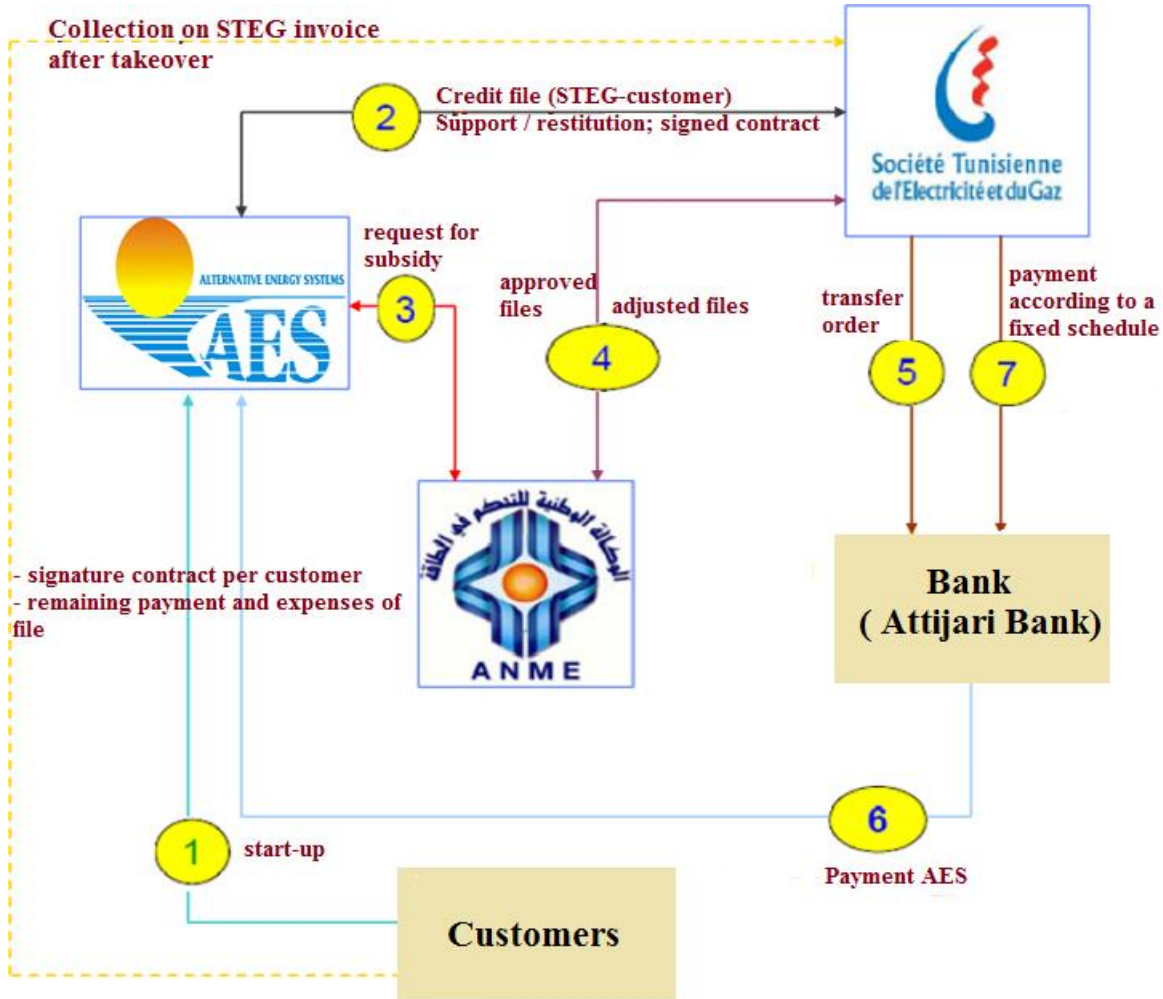
### Financial incentives

- A subsidy on every purchase of SHWS a ceiling of 200 DT for SHWS of capacities 200 liters and 400 DT for SHWS of capacities 300 liters and more), served by the Tunisian State ( ANME);
- A bank loan over a period of 5 years that is repaid through instalments included in the electricity bill.

### Financing plan for the acquisition of a SHW

- A subsidy on each purchase of SHW.
- A credit to AES (Attijari Bank).
- Guarantee and recovery of credit by STEG.
  - ☞ The appropriations granted are of the order of:
- 550 DT and 750 DT
- 950 DT and 1 150 DT
  - ☞ Refundable over 5 years, in 30 installments on each electricity bill (once every two months) or 60 installments (once every month).
  - ☞ Preferential interest rate equal to MT + 1.2%.

**PROSOL residential / Accession procedure**



# PROSOL PROGRAM



## Solar Thermal



التجاري بنك  
Attijari bank

Société Tunisienne  
de l'Electricité et du Gaz



**Alternative Energy Systems Sarl**

29 Avenue Tahar Sfar, 4000 Sousse – Tunisie

Tel. : 73 212 908 / 73 213 307

Fax : 73 212 909

Email : aes@planet.tn

http : www.aes-tunisie.com