



TUNISIAN REPUBLIC



ANME



RELS



ALTERNATIVE ENERGY SYSTEMS

PV INSTALLATIONS CONNECTED TO THE GRID
 PROJECT: ENERGY RENOVATION OF HOUSING "RELS"
 CASE STUDY: HOUSING OF THE MUNICIPALITY OF SFAX

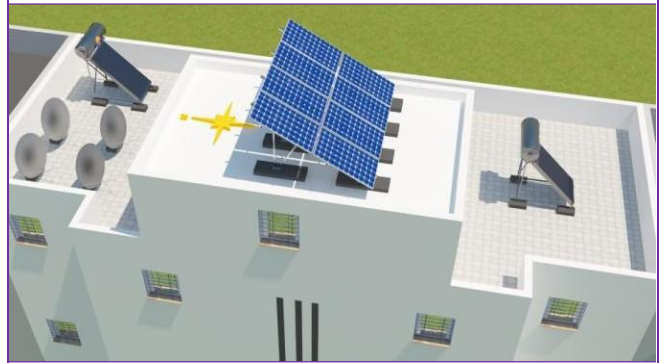
RELS - HOUSES OF THE MUNICIPALITY OF SFAX
 TOTAL INSTALLED POWER: 4000 W_c

□ Villa :



- 1 photovoltaic power plant 2 000 W_c composed of::
 - ↪ 8 photovoltaic modules: 8*250 W_c
 - ↪ 1 Power inverter 2 000 W

□ Two apartments:



- 2 unit photovoltaic power installations 1 000 W_c each consisting of:
 - ↪ 4 photovoltaic modules: 4*250 W_c
 - ↪ 1 Power inverter 1 300 W



- Start date of the installation: **September 2016**
- Study, design and implementation: Alternative Energy Systems « **AES** » Sousse.

